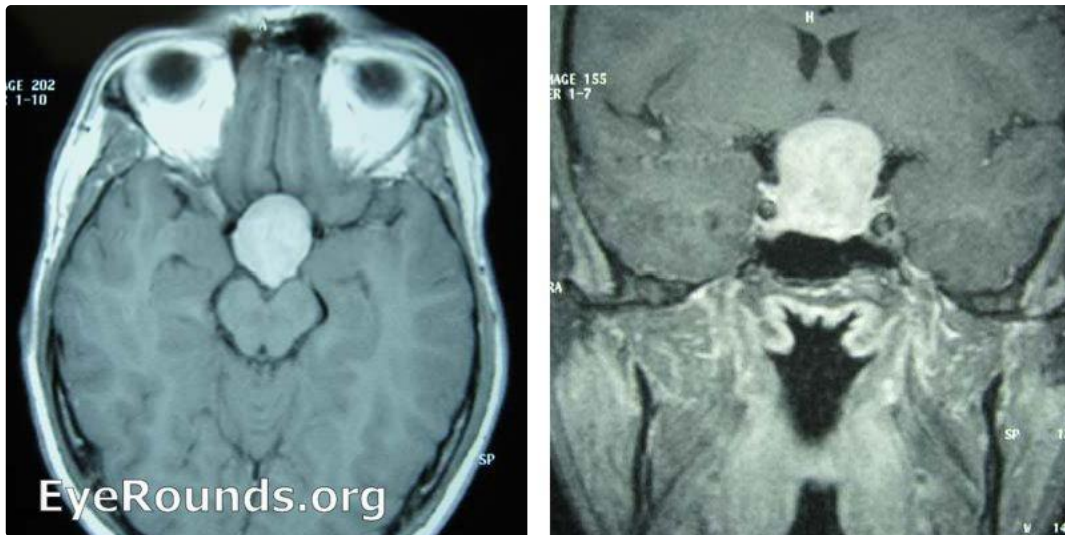


Pituitary adenoma

Category(ies): Neuro-ophthalmology

Contributor: [Andrew Doan, MD, PhD](#)



Sellar mass on MRI scans.

[Enlarge](#) [Download](#)

Image Permissions:



Ophthalmic Atlas Images by [EyeRounds.org](#), [The University of Iowa](#) are licensed under a [Creative Commons Attribution-NonCommercial-NoDerivs 3.0 Unported License](#).

Address

University of Iowa
Roy J. and Lucille A. Carver College
of Medicine
Department of Ophthalmology and

Legal

Copyright © 2019 The University of
Iowa. All Rights Reserved
Report an issue with this page

Related Links

Cataract Surgery for Greenhorns
EyeTransillumination
Gonioscopy.org
Iowa Glaucoma Curriculum

EyeRounds Social Media

Follow



Visual Sciences
200 Hawkins Drive
Iowa City, IA 52242

[Support Us](#)

[Web Privacy Policy |
Nondiscrimination Statement](#)

[Iowa Wet Lab
Patient Information
Stone Rounds
The Best Hits Bookshelf](#)

[Receive notification of new cases,
sign up here
Contact Us
Submit a Suggestion](#)