

Vogt's striae in keratoconus

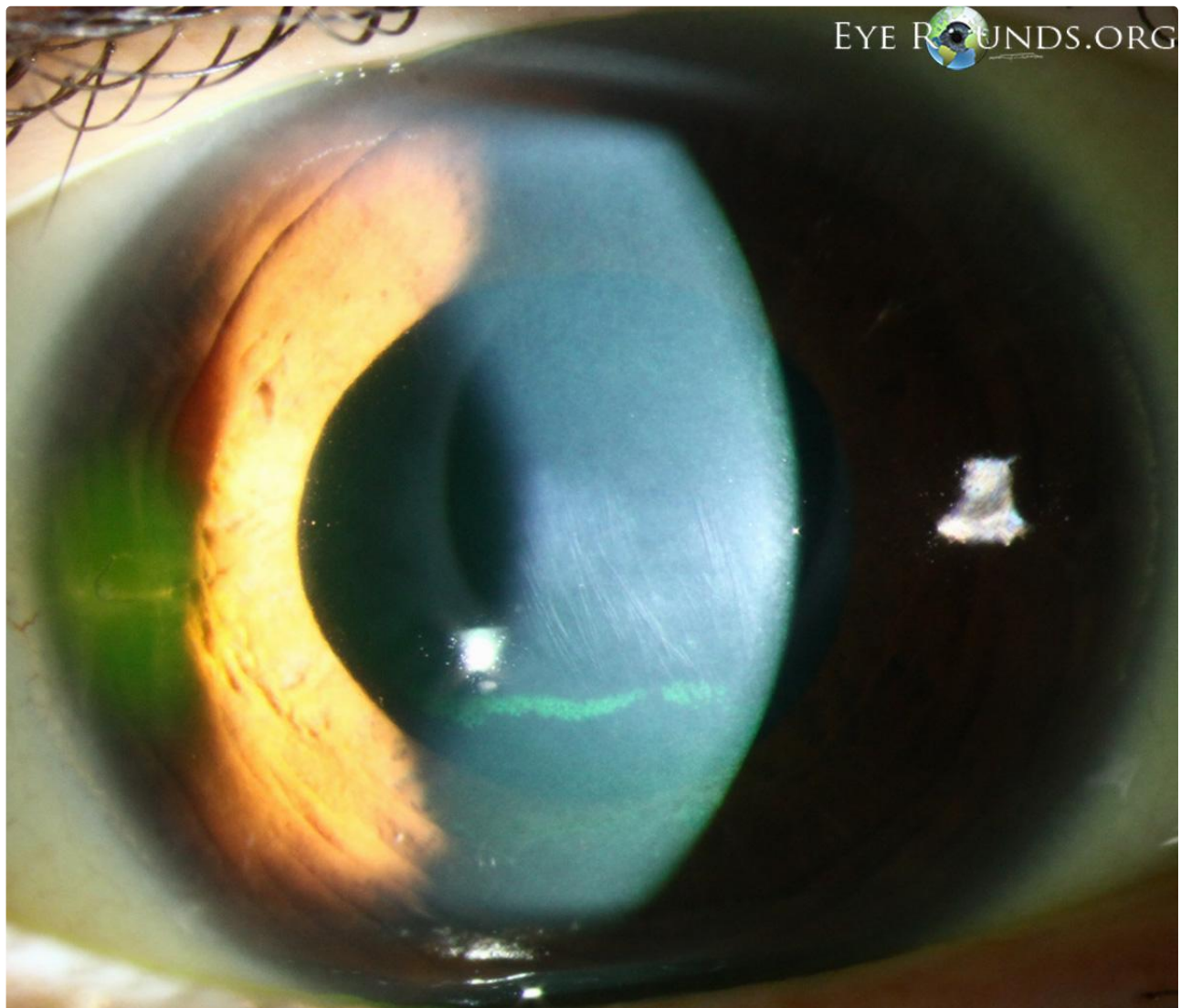
Category(ies): Cornea

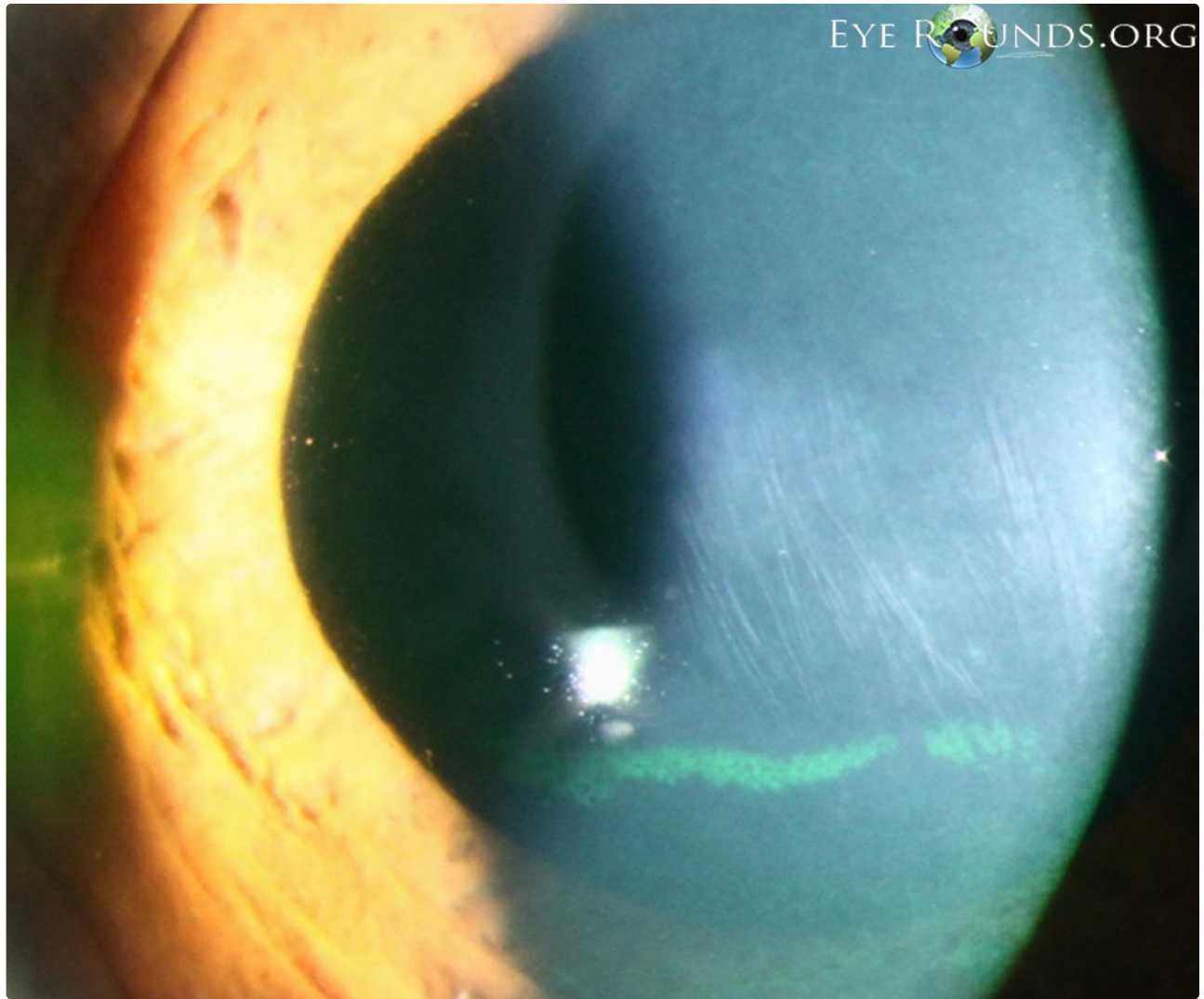
Contributor: [Christopher A. Kirkpatrick, MD](#)

Photographer: Toni Venckus, CRA

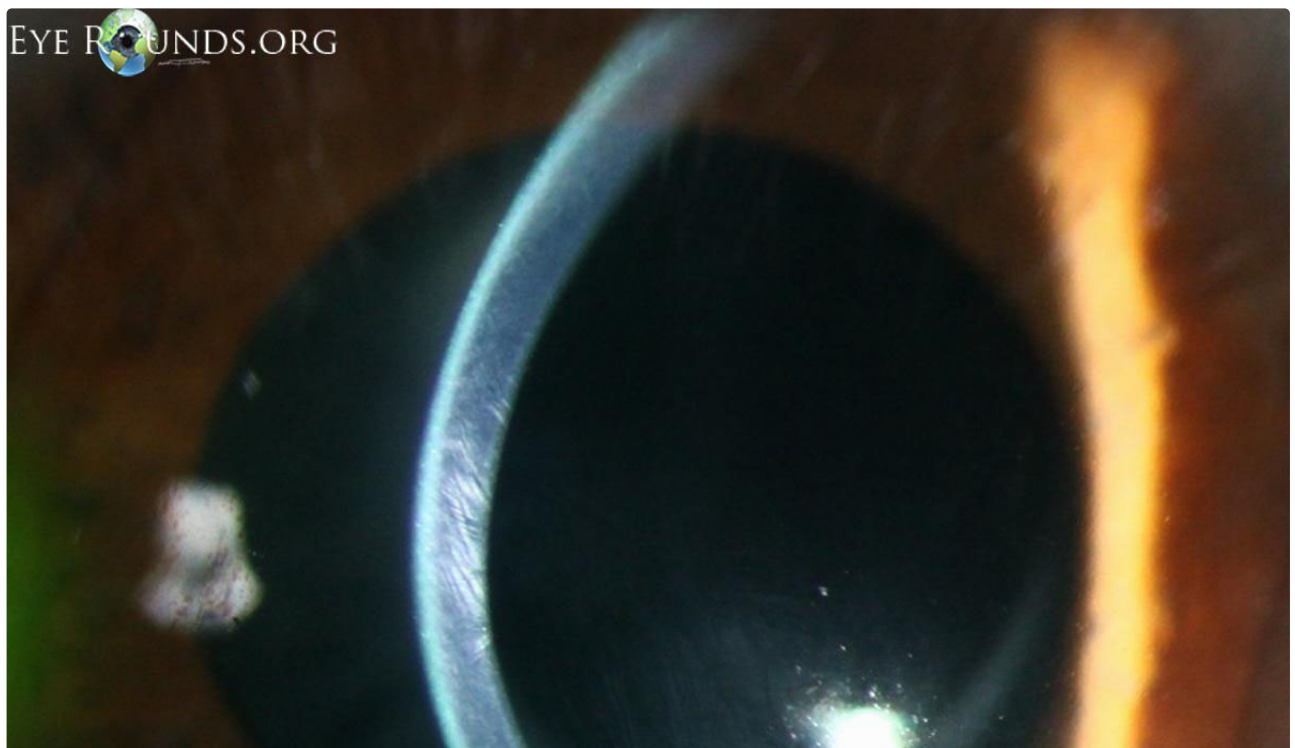


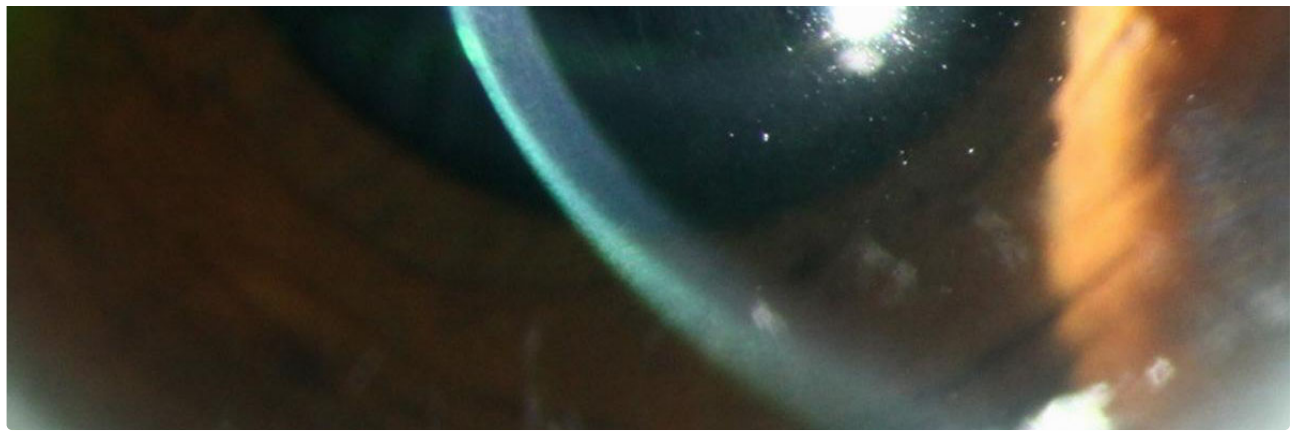
Vogt's striae are vertical (rarely horizontal) fine, whitish lines in the deep/posterior stroma and Descemet's membrane commonly found in patients with keratoconus. It may be asymmetric depending on the degree of keratoconus in each eye. There is a positive correlation between the orientation of the lines with the steepest axis of the cornea and the mechanism is thought to be related to mechanical stress forces on collagen lamellae radiating from the cone apex. The striae can temporarily disappear with external pressure to the globe.





[Enlarge](#) [Download](#)





[Enlarge](#) [Download](#)

Image Permissions:



Ophthalmic Atlas Images by [EyeRounds.org](#), [The University of Iowa](#) are licensed under a [Creative Commons Attribution-NonCommercial-NoDerivs 3.0 Unported License](#).

Address

University of Iowa
Roy J. and Lucille A. Carver College
of Medicine
Department of Ophthalmology and
Visual Sciences
200 Hawkins Drive
Iowa City, IA 52242

[Support Us](#)

Legal

Copyright © 2019 The University of
Iowa. All Rights Reserved
[Report an issue with this page](#)
[Web Privacy Policy](#) |
[Nondiscrimination Statement](#)

Related Links

[Cataract Surgery for Greenhorns](#)
[EyeTransillumination](#)
[Gonioscopy.org](#)
[Iowa Glaucoma Curriculum](#)
[Iowa Wet Lab](#)
[Patient Information](#)
[Stone Rounds](#)
[The Best Hits Bookshelf](#)

EyeRounds Social Media

Follow



Receive notification of new cases,
[sign up here](#)
[Contact Us](#)
[Submit a Suggestion](#)