

## Lymphomatous infiltration of left optic nerve with central retinal artery occlusion

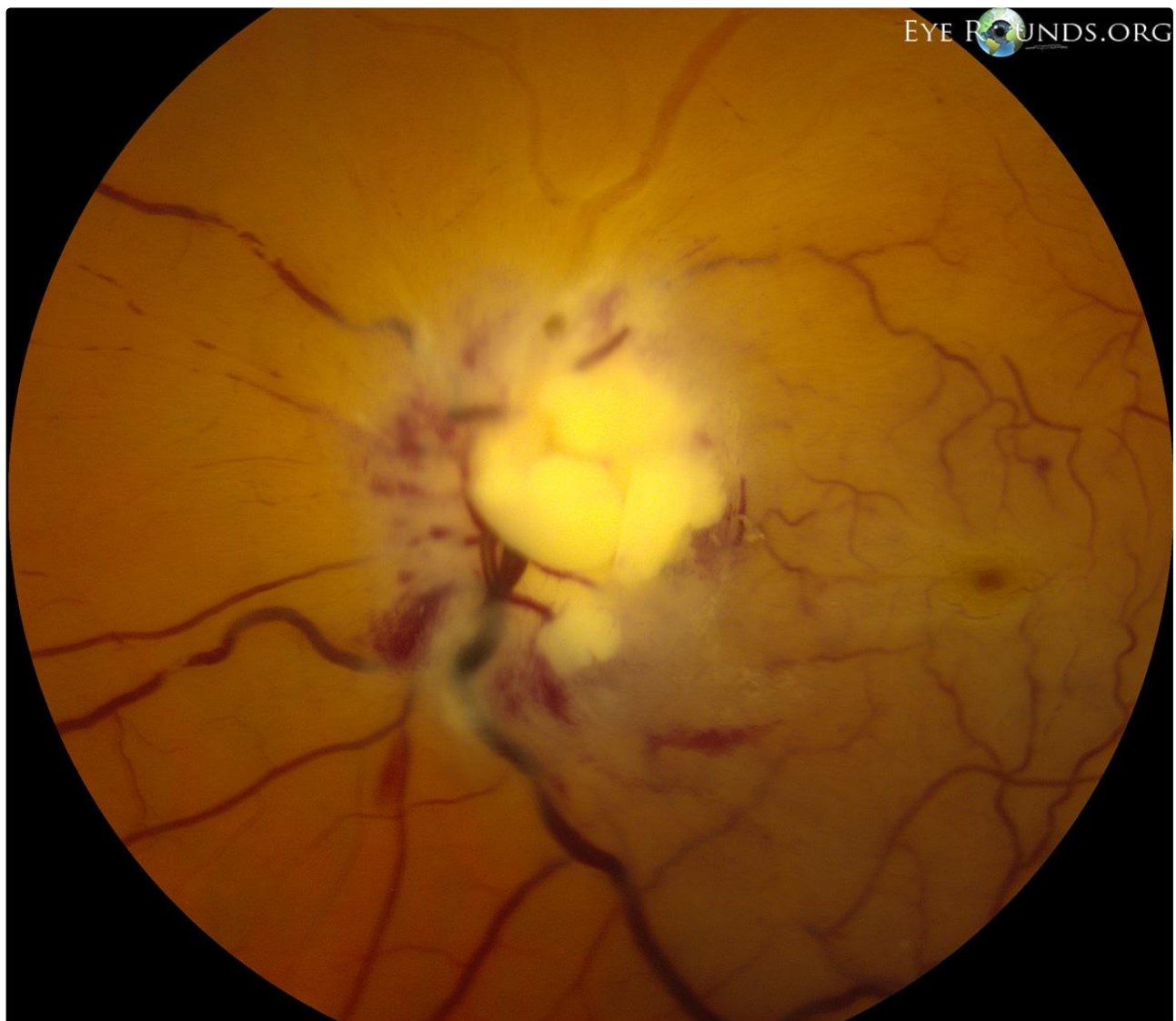
**Category(ies):** Retina, Vitreous

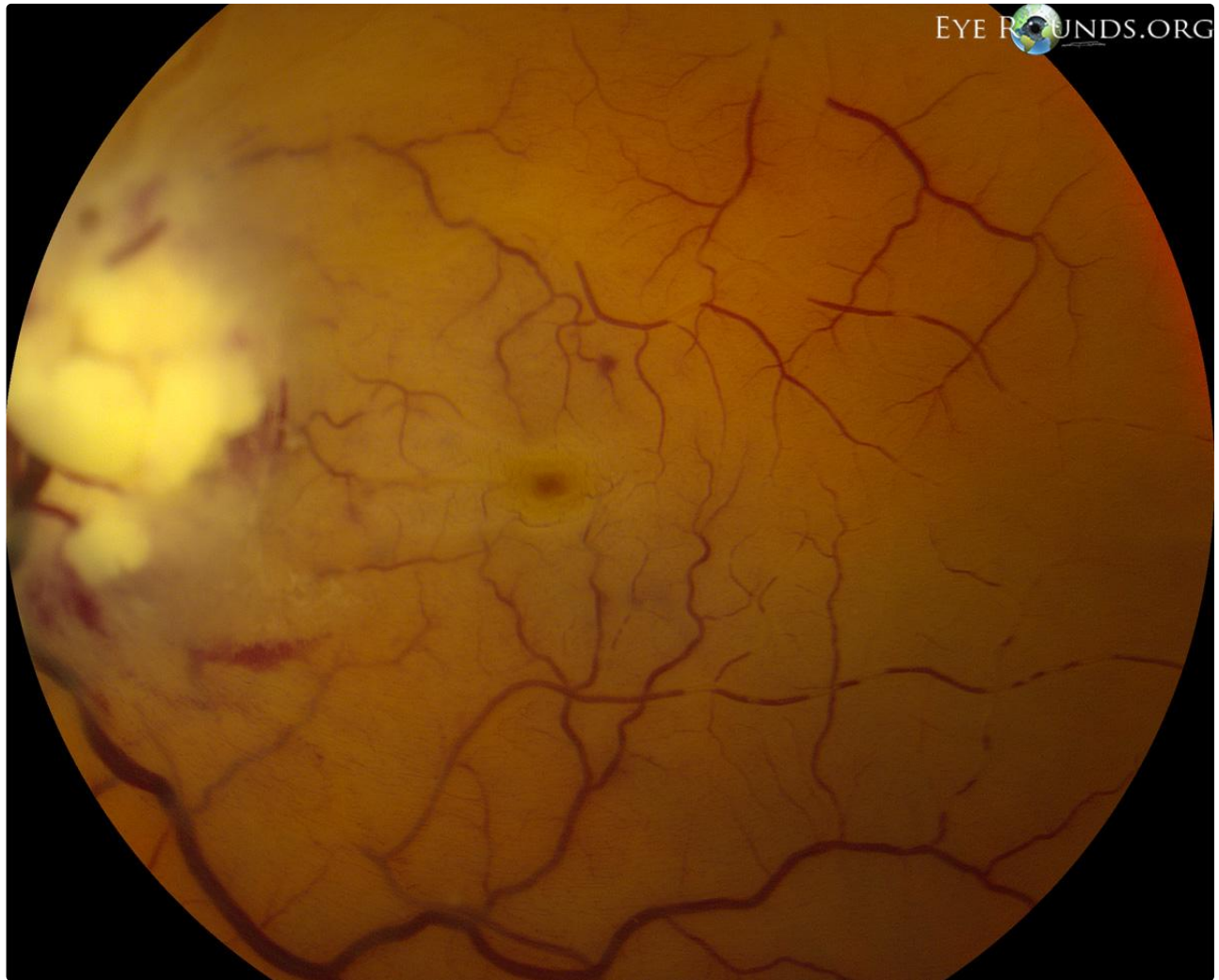
**Contributor:** Jon Hager, MD

**Photographer:** Carol Chan, CRA



The patient was a 57-year-old man with vision loss in the right eye (OD) greater than left eye (OS) in the setting of a craniopharyngioma, which was resected 16 years prior. His visual acuity had been no light perception OD and 20/20 OS since the procedure.





[Enlarge](#) [Download](#)

#### Image Permissions:



Ophthalmic Atlas Images by [EyeRounds.org](https://www.eyerounds.org), [The University of Iowa](https://www.eyerounds.org) are licensed under a [Creative Commons Attribution-NonCommercial-NoDerivs 3.0 Unported License](https://creativecommons.org/licenses/by-nc-nd/3.0/).

#### Address

University of Iowa  
Roy J. and Lucille A. Carver College  
of Medicine  
Department of Ophthalmology and  
Visual Sciences  
200 Hawkins Drive  
Iowa City, IA 52242

#### Legal

Copyright © 2019 The University of  
Iowa. All Rights Reserved  
Report an issue with this page  
Web Privacy Policy |  
Nondiscrimination Statement

#### Related Links

Cataract Surgery for Greenhorns  
EyeTransillumination  
Gonioscopy.org  
Iowa Glaucoma Curriculum  
Iowa Wet Lab  
Patient Information  
Stone Rounds

#### EyeRounds Social Media

Follow



Receive notification of new cases,  
sign up here  
[Contact Us](#)

