

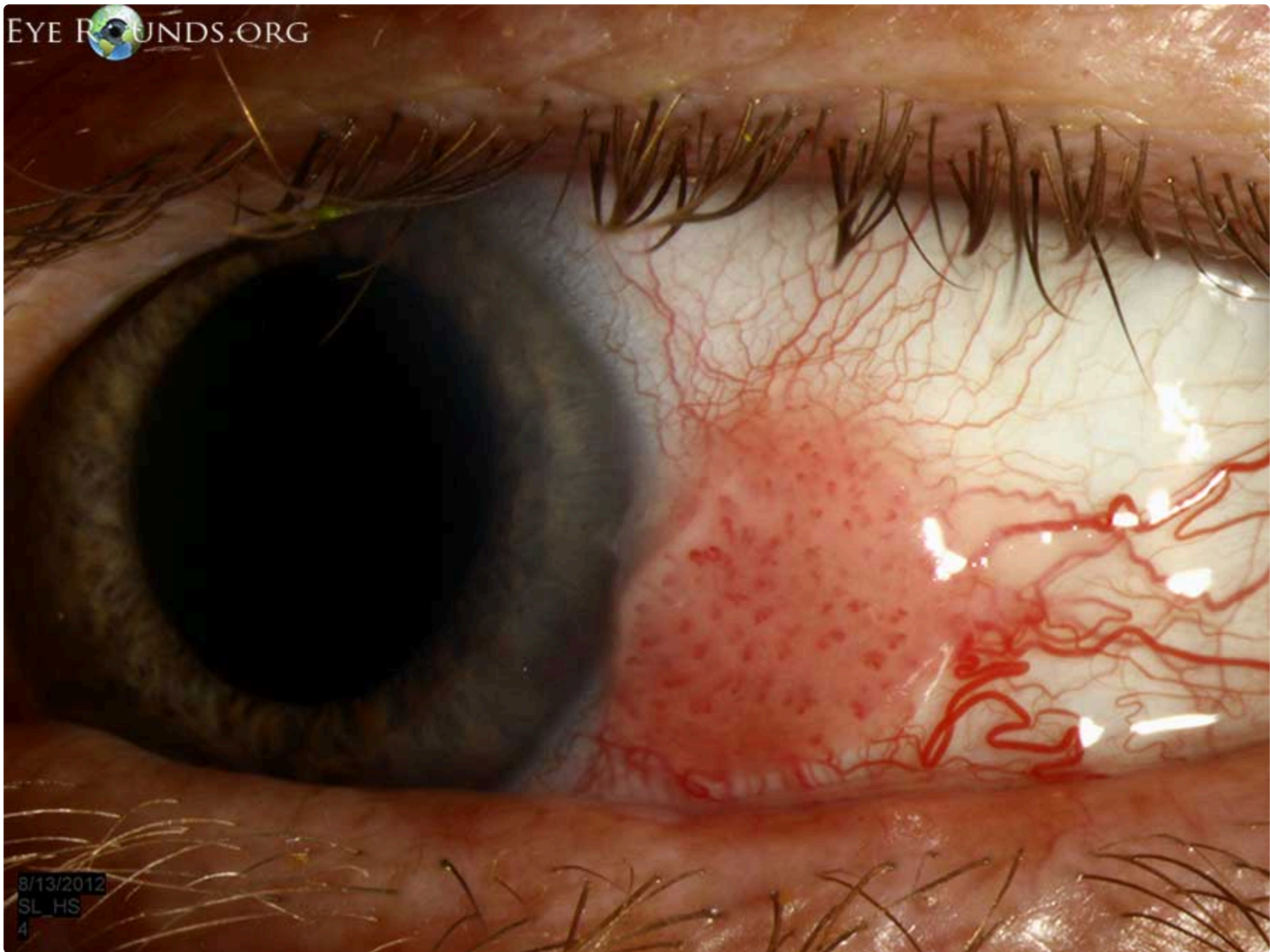


Conjunctival intraepithelial neoplasia (CIN) with full thickness dysplasia (squamous cell carcinoma in situ)

Category(ies): Cornea, External Disease

Contributor: John Chen, MD, PhD

Photographer: Cindy Montague, CRA



Conjunctival intraepithelial neoplasia (CIN) with full thickness dysplasia (squamous cell carcinoma in situ)

 [Enlarge](#)  [Download](#)



Enlarged: Conjunctival intraepithelial neoplasia (CIN) with full thickness dysplasia (squamous cell carcinoma in situ)

[Enlarge](#)

[Download](#)

Conjunctival Squamous Cell Carcinoma (SCC) in situ

Category(ies): Cornea / External Eye Disease

Contributor: Ella J. Gehrke MD; Kanwal Singh Matharu MD

Photographer: Sarah L Skiles

Posted: 04/17/2025

A 68-year-old male patient presented for a routine cataract evaluation and was found to have a suspicious conjunctival lesion in the left eye. He reports symptoms of foreign body sensation, itching, and extreme ocular dryness (notably frequent blinking). Patient has known history of cryotherapy for precancerous skin lesions on the face. On exam, best-corrected visual acuity was 20/20 in both eyes with intraocular pressures of 19 mmHg OD and 20 mmHg OS. Extraocular movements and visual fields were full bilaterally. Slit lamp exam of the left eye revealed a nasal, elevated, gelatinous, flesh-colored conjunctival lesion with leukoplakic areas extending approximately 1 mm onto the cornea, along with a temporal pinguecula and mildly prominent nasal vessels. Patient underwent conjunctival biopsy of the left eye, and pathology returned with moderately differential squamous cell carcinoma in situ with positive margins. Patient underwent 6 rounds of topical chemotherapy therapy with 5-FU.



Slit lamp photograph of the left eye demonstrates a nasal, elevated, gelatinous, flesh-colored conjunctival lesion with leukoplakic areas extending approximately 1 mm onto the cornea, along with prominent nasal vessels.

[🔍 Enlarge](#) [📄 Download](#)



Slit lamp photograph of the left eye in lateral gaze demonstrates a nasal, elevated, gelatinous, flesh-colored conjunctival lesion with leukoplakic areas extending approximately 1 mm onto the cornea, along with prominent nasal vessels.

[Enlarge](#) [Download](#)

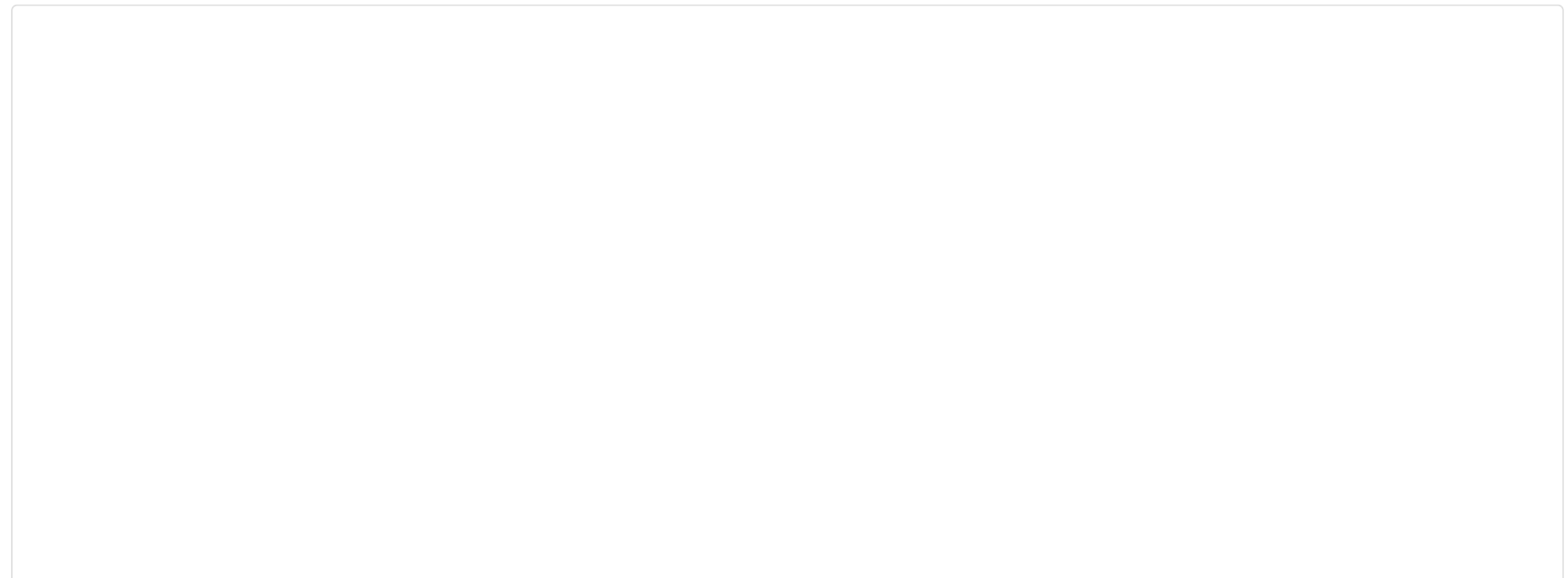
Image Permissions:



Ophthalmic Atlas Images by [EyeRounds.org](#), [The University of Iowa](#) are licensed under a [Creative Commons Attribution-NonCommercial-NoDerivs 3.0 Unported License](#).



Related Articles





[A Very Unusual Case of Ocular Surface Squamous Neoplasia.](#)

IOWA

Carver College of Medicine

Department of Ophthalmology and Visual Sciences

University of Iowa
Roy J. and Lucille A. Carver College of Medicine
Department of Ophthalmology and Visual Sciences
200 Hawkins Drive
Iowa City, IA 52242

[Support Us](#)

Copyright © 2019 The University of Iowa. All Rights Reserved
[Report an issue with this page](#)
[Web Privacy Policy](#) | [Nondiscrimination Statement](#)

Follow



[Receive notification of new cases, sign up here](#)
[Contact Us](#)
[Submit a Suggestion](#)